



Furniture for
the Bath



Vanity Program

Our vanity program is designed to provide furniture quality cabinetry for the bath. We have designed this product offering to have the utmost in choice and flexibility. *The program includes:*

- **Bath vanities**
- **Tall storage cabinets**
- **Wall and mirror storage**

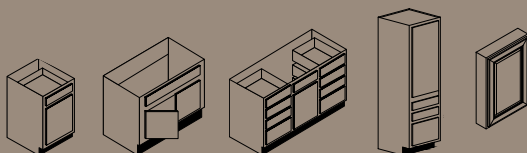
Cabinet choices include a full offering of colors, styles and species from our kitchen program (see your Door Style Guide). Bath cabinets can be created with a number of end panel options, as well as a variety of base choices. Use this flexibility to create truly personalized cabinetry for the bath.

Our new Vanity Program allows you to custom design your furniture for the bath.

Three Easy Steps:

1

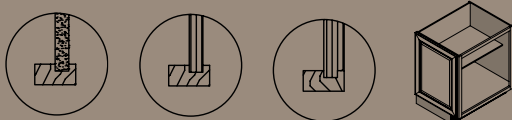
Choose your type: vanity, tall storage, mirror/wall storage



2

Choose your end panel

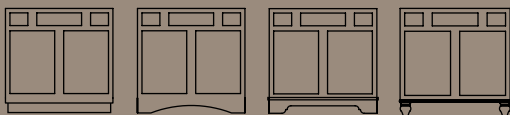
(Does not apply to tall or mirror/wall storage)



3

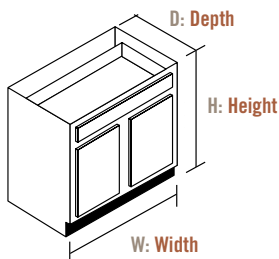
Choose your base

(Does not apply to mirror/wall storage)



Step One: Choose Your Type and Size: Vanity

Vanity Base Cabinets



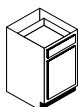
Choose the size and type of vanity that you want. (Tall Storage options are on page 8.)

Once you've made your selection, choose your End Panel (Step 2) and Base (Step 3).

D: All vanities available in either 18" or 21" depths.

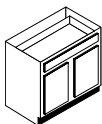
Vanity Base

VB



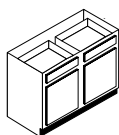
1 Door, 1 Drawer

H:	34.5"	31.5"
W: 12"	●	—
15"	●	●
18"	●	●
21"	●	●
24"	●	—



2 Doors, 1 Drawer

H:	34.5"	31.5"
W: 27"	●	—

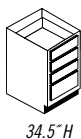


2 Doors, 2 Drawers

H:	34.5"	31.5"
W: 30"	●	●
33"	●	●
36"	●	●
39"	●	●
42"	●	●
45"	●	—
48"	●	—

Vanity Drawer

VD



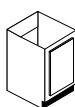
3 or 4 Drawers

H:	4 Drawers 34.5"	3 Drawers 31.5"
W: 12"	●	—
15"	●	●
18"	●	●
21"	●	●
24"	●	●



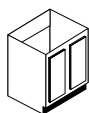
Vanity Tall Door

VFH



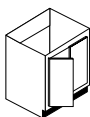
1 Door

H:	34.5"	31.5"
W: 12"	●	—
15"	●	●
18"	●	●
21"	●	—



2 Doors

H:	34.5"	31.5"
W: 24"	●	—
27"	●	—
30"	●	●
33"	●	—
36"	●	●
39"	●	●
42"	●	●
45"	●	—
48"	●	—

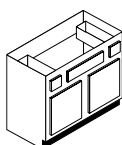


Butt Doors

H:	34.5"	31.5"
W: 24"	●	—
27"	●	—
30"	●	—

Vanity Sink

VS



2 Doors, 2 Drawers

H:	34.5"	31.5"
W: 36"	●	●
39"	●	●
42"	●	●
45"	●	—
48"	●	—

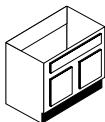
Vanity Sink Base

VSF



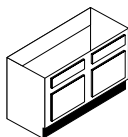
1 Door

H:	34.5"	31.5"
W: 12"	●	—
15"	●	●
18"	●	●
21"	●	●
24"	●	—



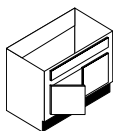
2 Doors

H:	34.5"	31.5"
W: 27"	●	—



2 Doors

H:	34.5"	31.5"
W: 30"	●	●
33"	●	●
36"	●	●
39"	●	●
42"	●	●
45"	●	—
48"	●	—

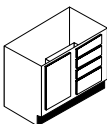


Butt Doors

H:	34.5"	31.5"
W: 24"	●	—
27"	●	—
30"	●	—

Vanity Sink Drawer

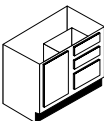
VSD



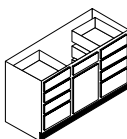
1 Door, 2-3 Drawers

H:	34.5"	31.5"
W: 24"	●	—
27"	●	—
30"	●	●
33"	●	●
36"	●	—
39"	●	—

34.5" H

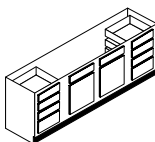


31.5" H



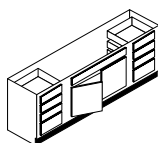
1 Door, 8 Drawers

H:	34.5"	31.5"
W: 42"	●	—
45"	●	—
48"	●	—



2 Doors, 8 Drawers

H:	34.5"	31.5"
W: 54"	●	—
57"	●	—
60"	●	—

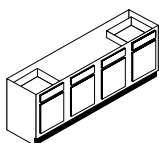


Butt Doors

H:	34.5"	31.5"
W: 54"	●	—
57"	●	—
60"	●	—

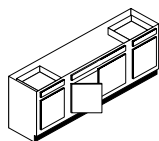
Console Vanity Sink

CVS



4 Doors, 2 Drawers

H:	34.5"	31.5"
W: 54"	●	—
57"	●	—
60"	●	●
72"	●	—

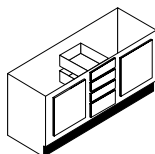


Butt Doors

H:	34.5"	31.5"
W: 54"	●	—
57"	●	—
60"	●	—

Console Vanity Drawer

CVD



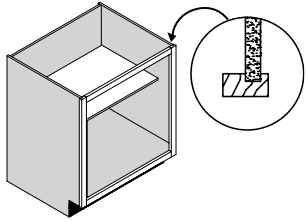
2 Doors, 4 Drawers

H:	34.5"	31.5"
W: 54"	●	—
57"	●	—
60"	●	—

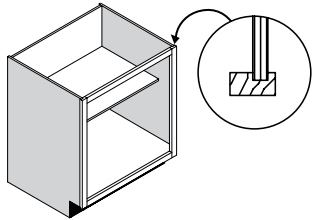
End Options

(Not available on Tall Storage or Mirror/Wall Storage)

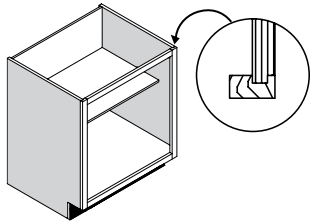
Standard



Finished Plywood

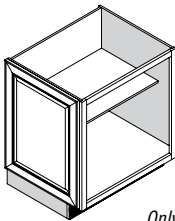


Flush Finished Plywood



Furniture End Panel Option

Matching End Panel



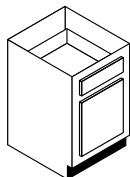
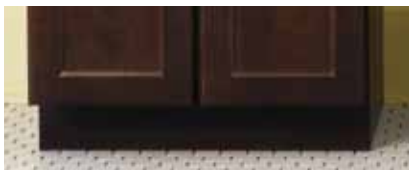
Only available with Furniture Base.

Base Options

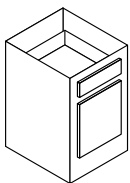
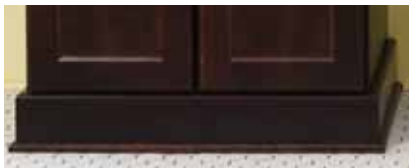
(Available on all Vanity and Tall Storage cabinets)

Toe-Kick Base Options

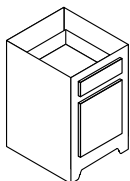
Standard



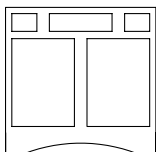
Flush (Shown with moulding)



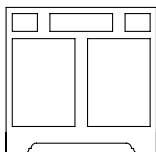
Valance



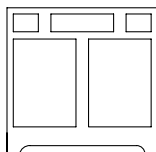
Valance
Options



Arch



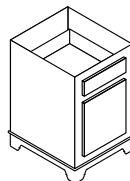
Corbel



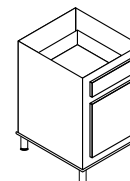
Bookcase

Furniture Base Options (See Next Page for Furniture Options)

Valance Platform



Foot Platform



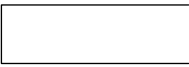
Step 3: Choose Your Base

Furniture Base Options

Step 1: **Choose an edge option**

Step 2: **Choose either a valance platform or a foot platform**

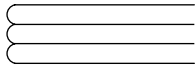
Edge Options



Square Edge



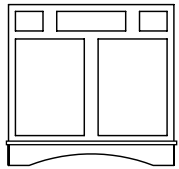
Single Bead Edge



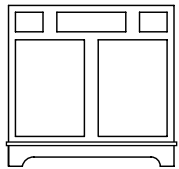
Triple Bead Edge

Valance Options

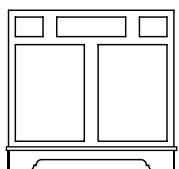
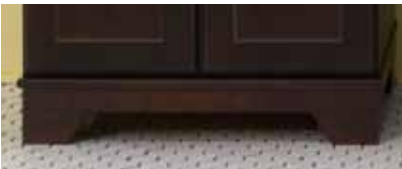
Arch Platform



Bookcase Platform

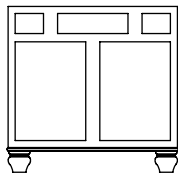


Corbel Platform

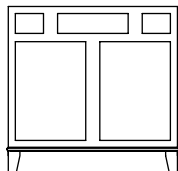


Foot Options

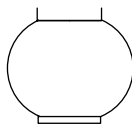
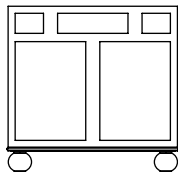
Cove Foot



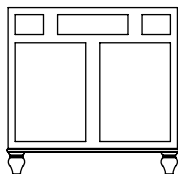
Tapered Foot



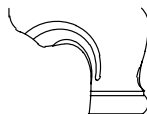
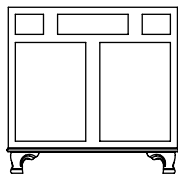
Bun Foot



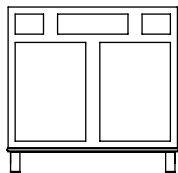
Tulip Foot



Corbel Foot



Metal Foot



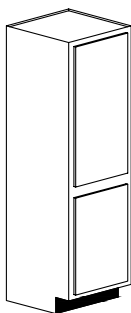
Tall Storage

(Available with base options; Step 2. No End Panel option)

D: All vanities available in either 18" or 21" depths.

2 Door Linen Cabinets

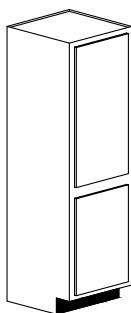
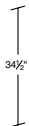
VLC



Base 34.5"

H: 76.5"

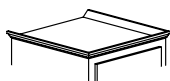
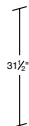
W: 18"



Base 31.5"

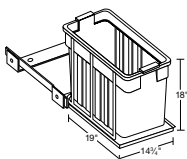
H: 73.5"

W: 18"



Crown Moulding:

Available all linen cabinets

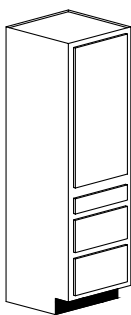


Hamper Kit:

Available only on 21" deep
2 door linen cabinets

1 Door, 3 Drawer Linen Cabinets

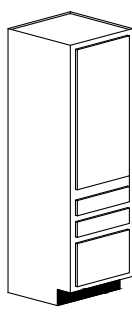
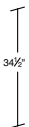
VLD



Base 34.5"

H: 76.5"

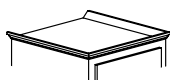
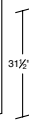
W: 18"



Base 31.5"

H: 73.5"

W: 18"



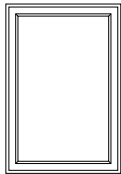
Crown Moulding:

Available all linen cabinets

Mirror/Wall Storage

Framed Mirrors

M



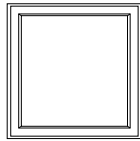
Rectangle

H: 30"

W: 21"

H: 36"

W: 24"



Square

H: 30"

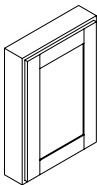
W: 30"

H: 36"

W: 36"

Decorative Mirror Wall Cabinets

DMW

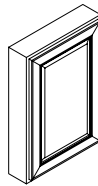


Shaker Style

H: 31"

W: 21"

D: 5"

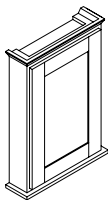


Miter Style

H: 31"

W: 21"

D: 5"

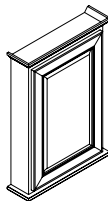


Shaker Style with Moulding

H: 33 ⁷/₁₆"

W: 23"

D: 6"



Miter Style with Moulding

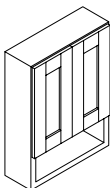
H: 33 ⁹/₁₆"

W: 23 ³/₁₆"

D: 6 ¹/₈"

Decorative Toilet Topper

TT

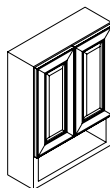


Shaker Style

H: 33"

W: 24"

D: 8"

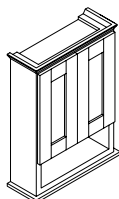


Miter Style

H: 33"

W: 24"

D: 8"

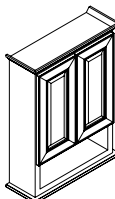


Shaker Style with Moulding

H: 35 ⁷/₁₆"

W: 24 ¹⁵/₁₆"

D: 9"



Miter Style with Moulding

H: 35 ⁹/₁₆"

W: 26 ³/₁₆"

D: 9"



Mid Continent Cabinetry

3020 Denmark Avenue, Suite 100, Eagan, MN 55121
651-234-3300 • www.midcontinentcabinetry.com

Specifications subject to change without notice

©2010 Norcraft Companies

000100/910/20000